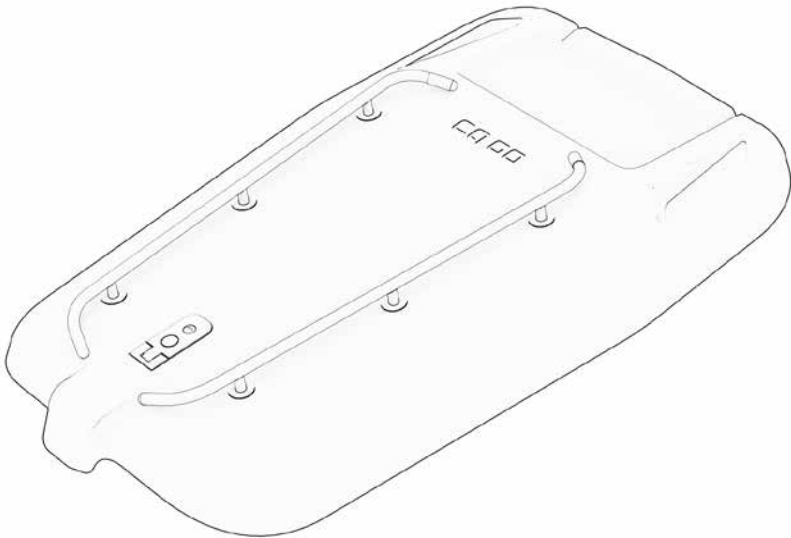




EN

# Lockable Cargo Box Lid & Additive Rack on Cargo Box Lid Assembly Instructions



# Contents

Safety notices ..... 3  
Statutory warranty / guarantee ..... 19

**Lockable Cargo Box Lid ..... 4**  
General information ..... 4  
Intended use ..... 5  
Scope of delivery ..... 6  
Technical data..... 6  
Assembly ..... 7  
General notes on care ..... 12

**Additive Rack on Cargo Box Lid ..... 13**  
General information ..... 13  
Intended use ..... 14  
Scope of delivery ..... 15  
Technical data..... 15  
Assembly ..... 16  
General notes on care ..... 18

The present assembly instructions is the translation of the original assembly instructions.

## Safety notices

These assembly instructions contain various types of notice.  
The notices are designed as follows:



### **Danger**

Potential hazards for your health and the health of your co-riders and other road users if you fail to observe the respective instructions or do not take corresponding precautions.



### **Notice**

Provides information about how to handle the product or refers to a passage in the assembly instructions that deserves special attention.



### **Caution**

Warns you about incorrect behaviour that can result in material and environmental damage.



### **Separate instructions**

Refers you to other assembly instructions for your FS200 Life which describe the respective assembly step in more detail if needed.

# Lockable Cargo Box Lid

## General information



Fig. 1

With the Lockable Cargo Box Lid, you can transform your FS200 Life into the ideal and safe means of transport. Please read these assembly instructions carefully in order to adjust, assemble and use the lid correctly.



The Cargo Box Lid is not compatible with the Ortho-Safety-Collar (Item no. 970 000 24), the Life-Soft-Top (Item no. 970 000 10), the Ergonomic-Child-Seat (Item no. 930 001 97) and the Infant-Sling-Mount (Item no. 923 000 27), which are also available as accessories for your FS200 Life.

## Intended use



Please note: There must never be people or animals in the cargo box when the lid is closed.  
**DANGER OF SUFFOCATION!**  
 Do not leave children unattended on or in the FS200 Life when it is fitted with the cargo box lid.



Please note that the lid has a maximum load capacity of 10 kilograms. Overloading the lid can lead to damage or even breakage of the lid.



Please note that it is unavoidable that some moisture remains on the lid of the box when it is raining. Some of this can get into the box when it is opened. You can prevent this simply by wiping the lid briefly before opening it.



Please make sure that no loose objects are lying on the box lid when you open it. These could fall uncontrollably.



Please note that the lid must always be securely closed while driving! Make sure that the lid lock is properly engaged and that the lock is locked. Failure to do so could result in the lid being opened accidentally while driving, which in the worst case could lead to loss of control over the vehicle and a fall.



Please note that in strong winds, the box lid provides a certain surface for the wind to attack and can therefore slam shut unexpectedly. Danger of entrapment!



Please ensure that no objects, clothing or body parts are trapped in the area of the hinges or the edge of the lid when opening and closing.

## Scope of delivery

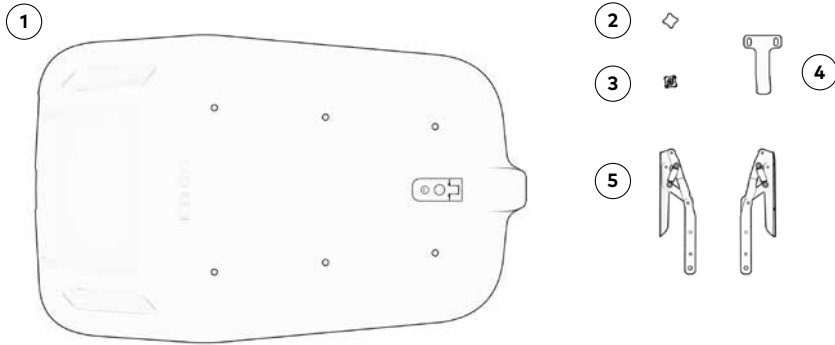


Fig. 2

- ① EPP lid
- ④ Lock hook
- ② Star grip screws 4 pcs
- ⑤ Hinge set
- ③ Keys

The Cargo Box Lid is shipped in a closed transport carton. Remove the transport protection material and dispose of it according to the local waste disposal regulations in your municipality at the appropriate disposal point.

## Technical data

Dimensions LxWxH:	1095 x 691 x 124mm
Weight:	approx. 3,34 kg
Hinge material:	Stainless steel
Lid material:	EPP
Small parts:	Steel / Rubber / Zinc die-cast

## Assembly

For optimal and easy assembly, it is best to set up your FS200 Life in a quiet place.

Tip: If you ask a second person to help, the assembly is easier: one person holds the cover, and the other does the fastening work. This prevents damage to the box and to the hinged spring rocker of the cover.

If you have any questions about the assembly, you can find video instructions at [www.cagobike.com](http://www.cagobike.com). You are also welcome to contact the Ca Go team or a Ca Go dealer.

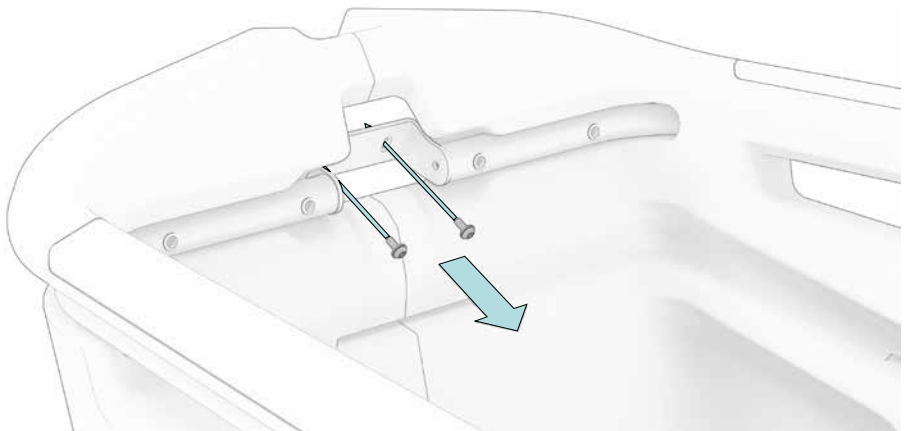
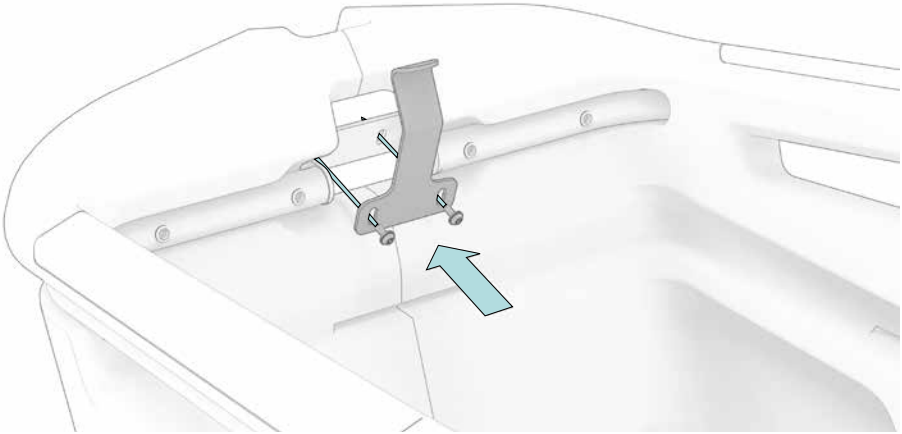
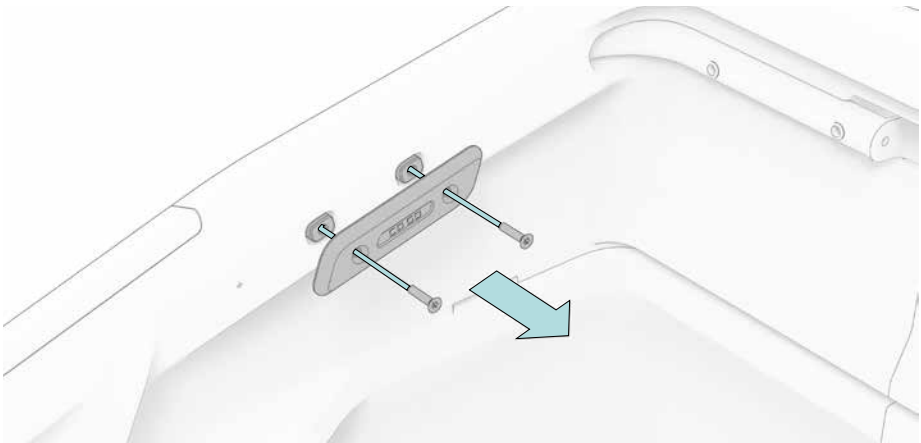


Fig. 3

Unscrew both screws at the front of the frame of the transport box – these screws hold the box in the frame (Fig. 3).

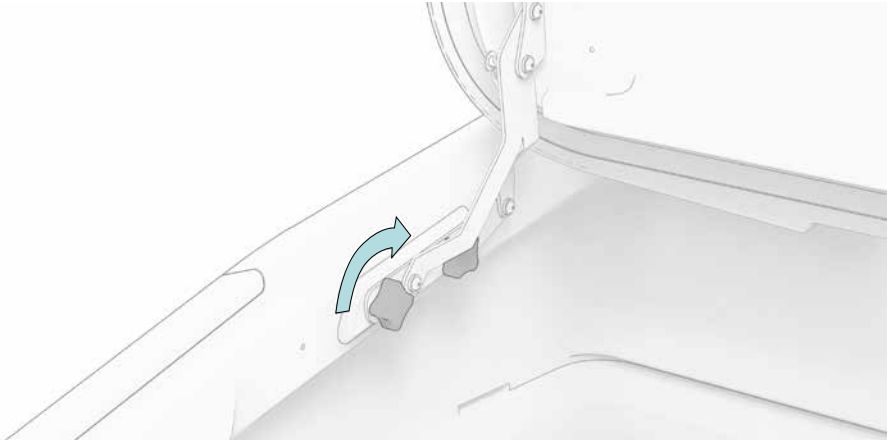
**Fig. 4**

Now place the lock hook as shown in the picture (Fig. 4) and fix it with the screws you have removed. Please make sure that the lock hook is in the right position – nose facing inwards.

**Fig. 5**

Remove the side screws from the panels (Torx key TX30). Place the spacer plates in the box according to their side, on the left or right side (L/R embossing on the back) (Fig. 5).





**Fig. 6**

Now place the EPP lid on the box collar at the back (picture) and fold out the hinges, caution: danger of jamming.

Now place a spacer plate (pay attention to the right and left) at the recesses between the hinge and the box. Align the holes of the hinge and the spacer plate with the threads in the rail. Now screw two star knob screws clockwise into the thread on each side. When all four star knob screws have been screwed in, hand-tighten them several times in succession (Fig. 6).

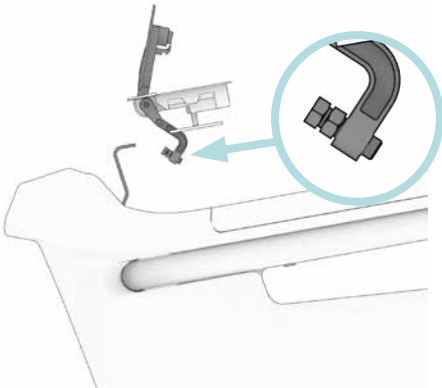


Fig. 7

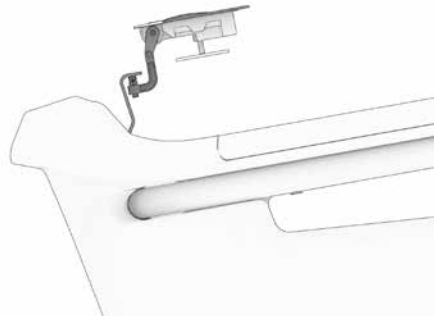


Fig. 8

On the locking mechanism at the bottom of the cover (Fig. 7 & 8) there is a screw incl. nut.

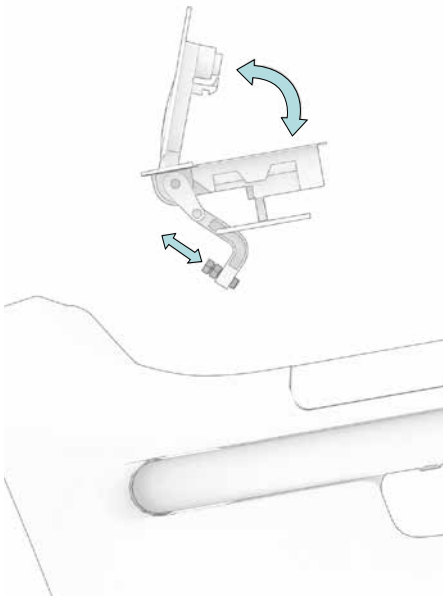


Fig. 9

If the lock cannot be closed when the lid is in place, or only with considerable force, the locking screw must be turned in further. If the cover still has play when the lock is engaged, you should unscrew it further. The screw must be adjusted so that the lock engages with a slight pre-tension when the lid is closed. The screw can now be secured with the nut.

If the travel of the screw is not sufficient for adjustment, the screws on the lock hook in the EPP box are loosened slightly so that it can be roughly aligned and tightened again (Fig. 9).

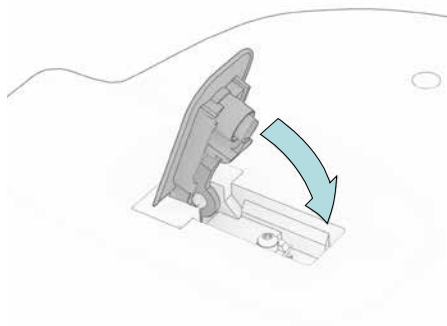


Fig. 10

To close the lid you have to put the lid down and press down the lock flap (Fig. 10). You will hear and feel a fine click. After successful assembly, the lid closes precisely and without resistance.

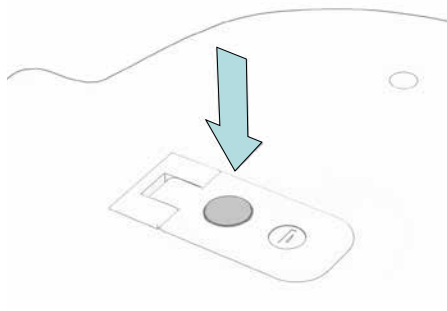


Fig. 11

To open the lid lock, simply press the button.

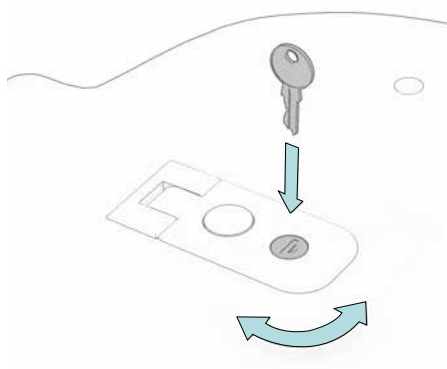


Fig. 12

The lid can be locked with the enclosed key.

## General notes on care



The screw connections should be checked regularly for tightness and fastened if necessary.



Do not use aggressive cleaning agents, acids or solvents for cleaning. This may attack or damage the surfaces. The stability of the components may then no longer be guaranteed.

The same cleaning and care instructions apply to the box lid as to the cargo box. Water is often sufficient for cleaning. If necessary, a mild cleaning agent, such as hand dishwashing liquid or soap, may be used.

# Additive Rack on Cargo Box Lid

## General information



**Fig. 1**

The additive rack can be mounted on the cargo box lid of the FS200 Life to transport objects. The maximum load is limited to 8 kg, whereby the transport items may be attached **BETWEEN**, but not **ON** the rails. In addition, the additive rack offers attachment points inside the lid. These attachment points can be used for a luggage net, for example.

## General information

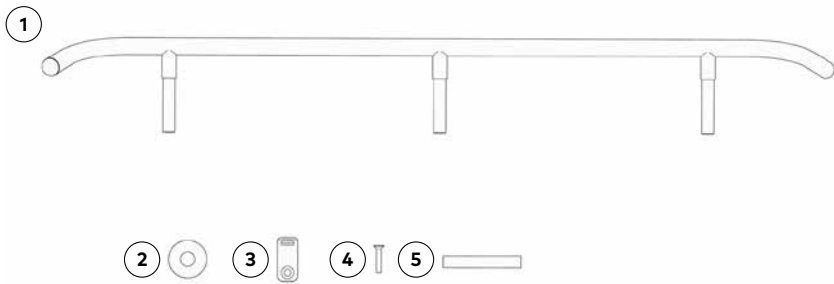


The additive rack may only be mounted and used on the Cargo Box Lid provided for this purpose. It is only released for the purpose described here. When transporting objects, ensure that the load is adequately secured.



The transport of people is strictly prohibited.

## Scope of delivery



**Fig. 2**

- ① 2x Rail
- ② 6x Washers
- ③ 6x Rectangular mounting plate
- ④ 6x Screw
- ⑤ 1x Tool

## Technical data

Dimensions LxWxH: 740 x 90 x 90 mm

Weight: approx. 0.57 kg

Material rail: Aluminium

Material end caps: Plastic

## Assembly

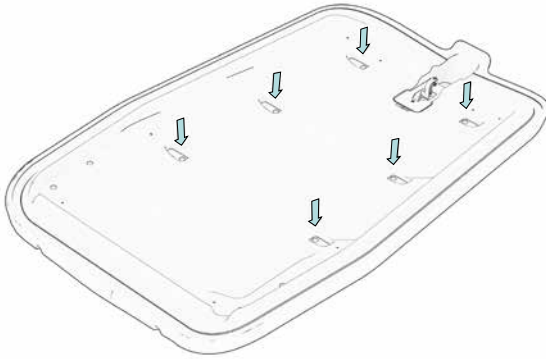


Fig. 3

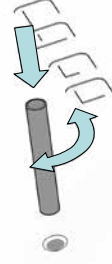


Fig. 4

First, the six fastening points marked in the Cargo Box Lid (Fig. 3) must be drilled through with the aid of the enclosed tool (Fig. 4).

Two procedures are suitable for this purpose:

1. The tool can be clamped in a cordless screwdriver and used as a drill. To do this, use the marks visible on the outside of the lid as a guide and drill the holes from the outside to the inside. It is recommended that the speed is as high as possible and the feed rate is as low as possible to prevent the EPP from tearing out.
2. If you do not have a cordless screwdriver available, you can also pierce the hole by hand. To do this, first screw in the enclosed tool 2-3 mm from the outside at the marked points. Then pierce the holes from the inside by also pushing the tool through the pilot holes with a rotating motion.

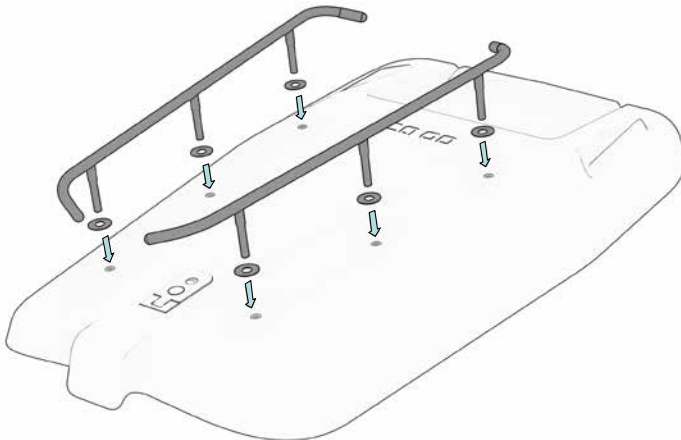




If accessibility for assembly is not guaranteed, the lid should be dismantled in advance. In addition, excessive loads should be avoided when the lid is open, as otherwise the hinges may be deformed. If in doubt, the lid should then be disassembled. You will find instructions on how to do this at the beginning of this manual.



When using the manual method, gloves should be worn to avoid injuries caused by sharp edges on the tool.



**Fig. 5**

The washers are then slid over the spacer sleeves (Fig. 5). The rails can now be pushed through the holes. Make sure that the ends protected with plastic face backwards in the direction of travel.

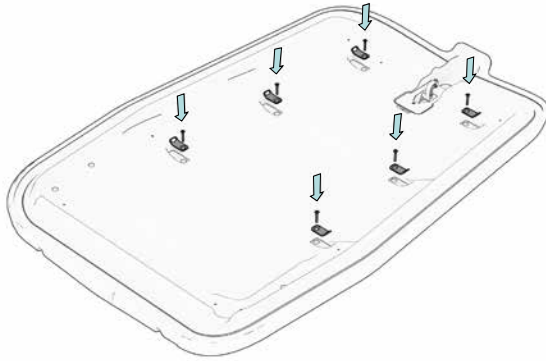


Fig. 6

Now the mounting plates can be connected to the spacer sleeves from the inside using the screws (Fig. 6). The tightening torque is 4–6 Nm.



Before each ride, please check that the Additive Rack is properly mounted.

## General notes on care

Water is often sufficient for cleaning and maintaining the top rack. If necessary, a mild cleaning agent, such as hand dishwashing liquid or soap, may be used.



Do not use aggressive cleaning agents, acids or solvents for cleaning. This may attack or damage the surfaces. The stability of the components may then no longer be given.

## Statutory warranty / guarantee

The legal statutory warranty applies.

You can find more details on the guarantee on our website:

**[www.cagobike.com](http://www.cagobike.com)**

Export to the USA and Canada is not permitted (product liability)!

---

## Service

If you have questions concerning this assembly instructions, please contact your Ca Go dealer or your Ca Go service team.



**Published by:**

**Ca Go Bike GmbH**

Am Autobahnkreuz 7

56072 Koblenz

Germany

+49 261 914090-600

info@cagobike.com

www.cagobike.com

Managing directors: Franc Arnold

Company register

Court of record: District Court Koblenz / register no.: HRB 26998 / VAT Id no. DE326206636

Responsible for distribution and marketing of the assembly instructions: Ingo Kahnt

Ca Go Bike GmbH reserves the right to change product specifications without prior notice.

Typographical errors, mistakes and modifications reserved. Version: 03/2023

©Reproduction, reprint and translation, as well as any use for economic purposes (including as extracts, in print or electronic form) without prior written approval is forbidden.